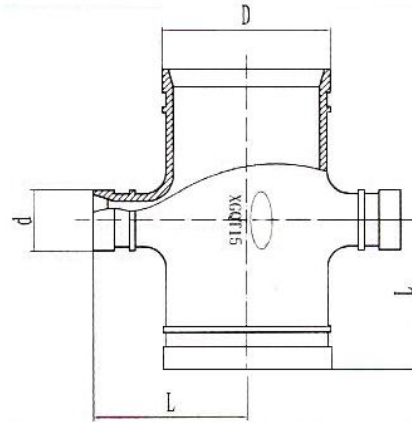


REDUCED GROOVED CROSS



UL/FM

Rated Ø (mm)	Pipe outside Ø (mm)	Rated Pressure MPa	L (mm)
40 x 32	48.3 X 42.4	2.5	60
65 x 50	76.1 X 60.3		90
80 x 50	88.9 X 60.3		94
80 x 65	88.9 X 76.1		
100 x 50	114.3 X 60.3		
100 x 65	114.3 X 76.1		104
100 x 80	114.3 X 88.9		
125 x 50	139.7 X 60.3		
125 x 65	139.7 X 76.1		
125 x 80	139.7 X 88.9		122
125 x 100	139.7 X 108.0		
125 x 100	139.7 X 114.3		
150 x 50	165.1 X 60.3		
150 x 65	165.1 X 76.1		
150 x 80	165.1 X 88.9		
150 x 100	165.1 X 108.0		142
150 x 100	165.1 X 114.3		
150 x 125	165.1 X 133.0		
150 x 125	165.1 X 139.7		
200 x 100	219.1 X 108.0		
200 x 100	219.1 X 114.3		
200 x 125	219.1 X 139.7		179
200 x 150	219.1 X 159.0		
200 x 150	219.1 X 165.1		
250 x 100	273.0 X 114.3		
250 x 125	273.0 X 139.7		215
250 x 150	273.0 X 165.1		
250 x 200	273.0 X 219.1		
300 x 100	323.9 X 114.3		
300 x 150	323.9 X 159.0		
300 x 150	323.9 X 165.1	245	
300 x 200	323.9 X 219.1		
300 x 250	323.9 X 273.0		

FEATURES:

Code: **GF-015**.
 Reducing Grooved Cross made of ductile iron.
 UL/FM approved.
 Color: Red RAL 3000.

