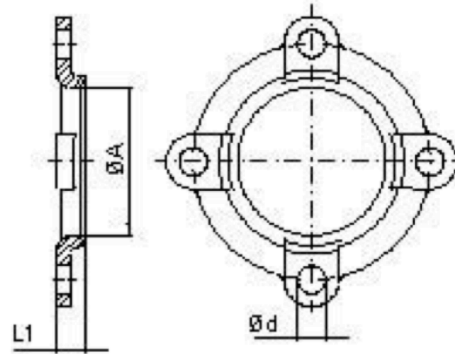
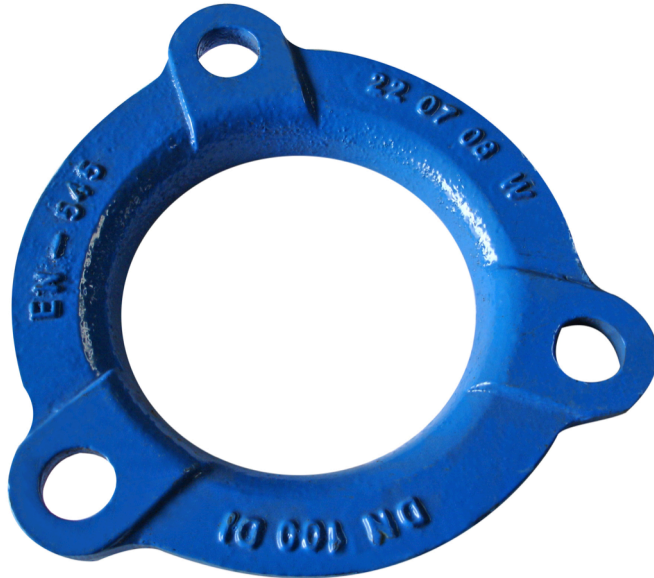


## GLAND JM-009

UNE-545



DN	BODY			
	- A (mm)	L1 (mm)	Nº	- d (mm)
60	80	23	2	23
80	102	23	3	23
100	122	25	3	23
125	148	25	3	23
150	174	25	4	23
200	226	27	5	23
250	278	29	6	23
300	331	29	7	23
350	383	30	8	23
400	435	32	8	23
450	487	37	8	23
500	538	39	10	23
600	642	42	12	23
700	745	53	16	27
800	849	55	18	27

**SPECIFICATIONS:**

Made in **Ductile iron**.  
**Blue epoxy** painted finish.  
 According to **UNE-EN 545 norms**.  
 Working pressure: **Until 25 bar**.

